



Change To New

***Cubicle* India**





“Building a good customer experience does not happen by accident, it happens by good service & good quality product.”



Introduction

- Established in 2018 by visionary founder Suman Verma.
- Prominent player in manufacturing and service of restroom cubicles.
- Commitment to quality, innovation and customer satisfaction.
- Successful projects nationwide.



Founder: Suman Verma

- Visionary founder driving Cubicle India's success.
- Founded with a vision to revolutionize restroom cubicle industry.
- Keen understanding of market dynamics and passion for excellence.





Combines
technology,
premium materials
and innovative
designs



Specializes in
manufacturing
high-quality
restroom cubicles



Comprehensive
range for
commercial,
institutional and
public spaces



Nature of Business



Customized
Design Solutions



Manufacturing
Excellence



Nationwide
Project Execution

Services Offered



Vision

We aspire to be India's top choice for restroom solutions, driven by innovation and quality that set industry benchmarks. Our focus is on enhancing user experiences through durable and innovative solutions, ensuring we redefine standards in the sector.



Our Brand



- Evolution into trailblazer in restroom solutions.
- Recent milestone: Launch of INDQB brand.
- Commitment to innovation, quality and customer-centric solutions.



INDQB: Elevating Spaces with Innovative Solutions



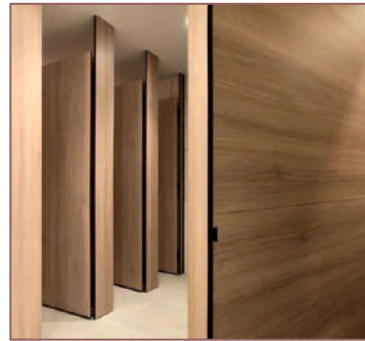
01

Modular
Restroom
Cubicles



02

Changing
Room
Partitions



03

Shower
Cubicles



04

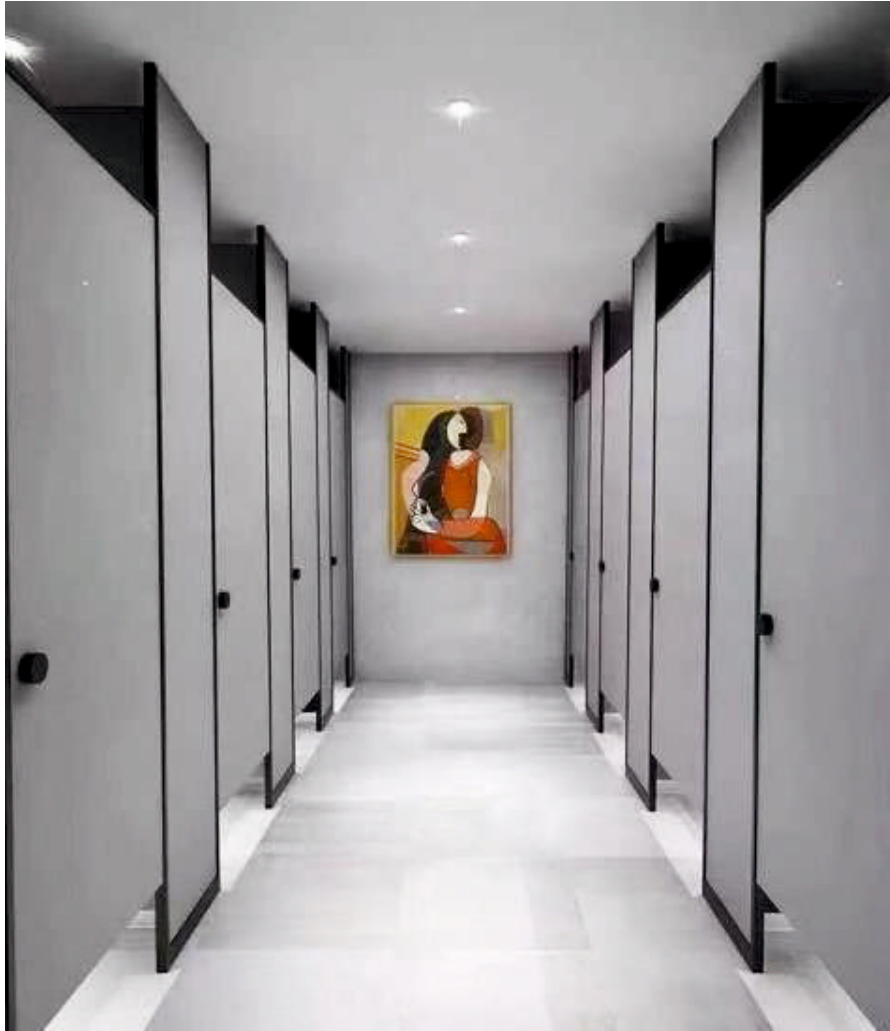
Urinal
Partitions



05

PD Doors





INDQB: Elevating Spaces with 13 Distinct Series

- Economy Series
- First Choice Series
- Ultimate Series
- Anchored Series
- Top Anchored Series
- Pipe Series
- Invisible Series
- Elegance Series
- Ceiling Hung Series
- Wall Hung Series
- Seamless Series
- INDQB KIDS Series





Economy Series

Most budgeted Cubicles yet look beautiful.

Thickness: 12mm

Size: 1350mmx1000mm

Height: 1980mm-2000mm

Bottom Gap: 120mm-150mm

All hardware is in plastic/nylon material and section is in Aluminum Black Anodized finish .

It is most Regular Series and budget friendly.





First Choice Series

This is the First Choice of Architect as its Durable as well reasonable.

Thickness: 12mm

Size: 1350mmx1000mm

Height: 1980mm-2000mm

Bottom Gap: 120mm-150mm

Hardware used in SS 304 Grade and all the sections in Aluminium in SS finished.





Ultimate Series

If you want long lasting durability you can go for Ultimate Series.

Thickness: 12mm/18mm

Size: 1350mmx1000mm

Height: 1980mm-2000mm

Bottom Gap: 120mm-150mm

All hardware used in SS 304 grade
also sections used in SS 304 grade.





Anchored Series

To give Elegant look to your restroom cubicles here you can go with Anchored Series.

In bottom we are using solid SS 316 Plates on fixed panels.



Ceiling Hung

Want unique look of your cubicles for your luxurious projects? Here you can go with ceiling hung model.

Thickness: 12mm/18mm

Size: 1300mmx1000mm

Height: 2400mm

Bottom Gap: 120mm-150mm

Cubicle panels directly inserted into the false ceiling and get it fixed by top rail inside the false ceiling and get covered with shoe plates.

It is a ceiling support model there is no support required in the bottom.



Curtain Series

It's similar to Ceiling hung series.

There is gap in bottom which help to clean surface easily also its sturdy from top as heavy top rail of 100mm width of aluminium material has to be used for this model.

No support required from bottom.

Thickness: 12mm/18mm

Size: 1350mmx1000mm

Height: 1980mm-2000mm

Bottom Gap: 120mm-150mm

It's also called Wall Support.





Elegance Series

Wow! Don't you think it's beautiful?

It's comes under full height series
Whatever will be the height below
12ft we can give you this series on
your demand.

Panels inserted into ceiling from top
and screwed with floor to the bottom.





Invisible Series

This series is made in order to consider Indian WC or Shower cubicles, this is not visible from bottom.

Bottom panel is supported with U channel skirting





Top Anchored Series

We have used shoe box plate on top as well as on bottom.

Height will be customize as ceiling height or as per the site condition.





Piping series

Its designed by using SS Rod Pipe and SS clipped to give neat and clean look to the cubicles.





PD doors

It's another option for doors at reasonable rate also no need to make granite framing sections itself is framing to fix the doors.





Where imagination meets innovation...



INDQB : KIDS Series:

- Vibrant Designs
- Safety First
- Customization for Fun
- Durability and Easy Maintenance
- Age-Appropriate Facilities
- Educational Elements
- Comfort and Accessibility



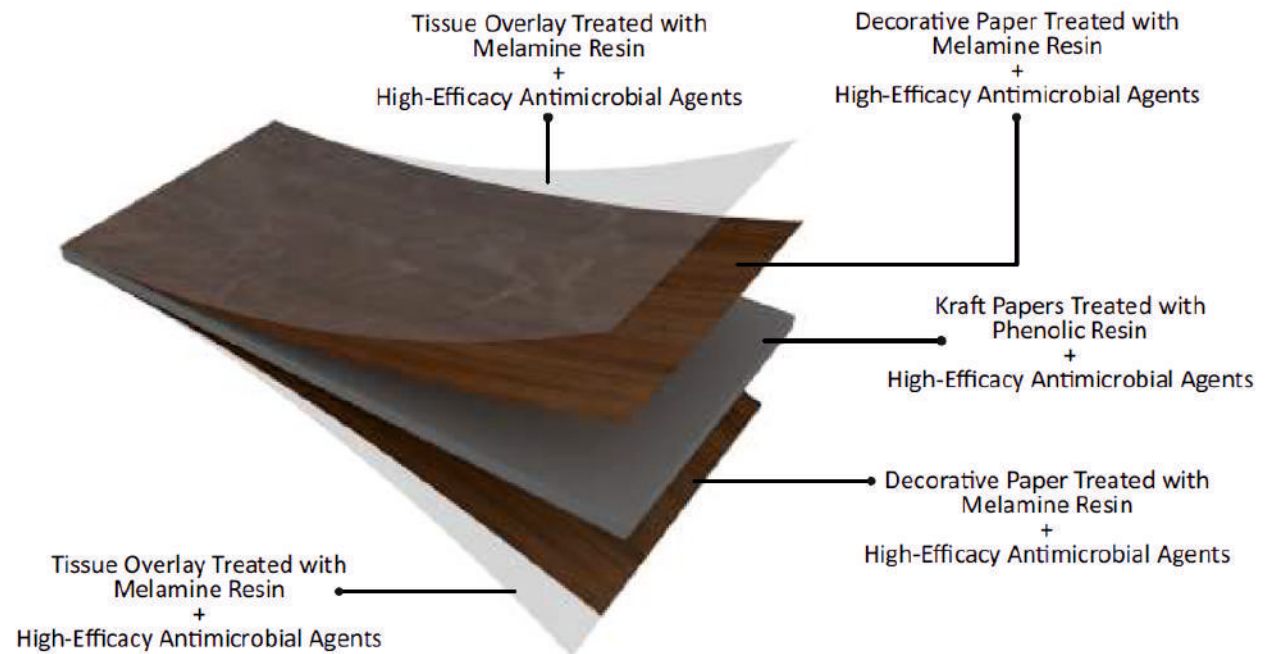
Materials Used in Cubicles

HPL Boards

Durable, wear-resistant,
moisture-resistant

Phenolic Craft Papers

Melamine-treated for
added durability



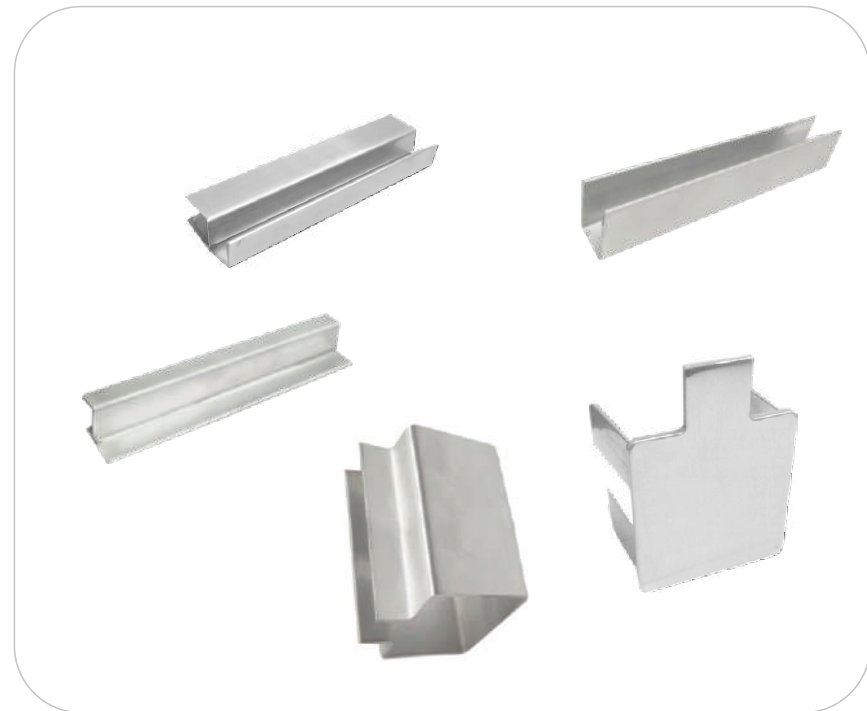
Materials Used in Cubicles

Sections and Channels

Aluminium



SS 304



Materials Used in Cubicles

Hardware Set

Nylon



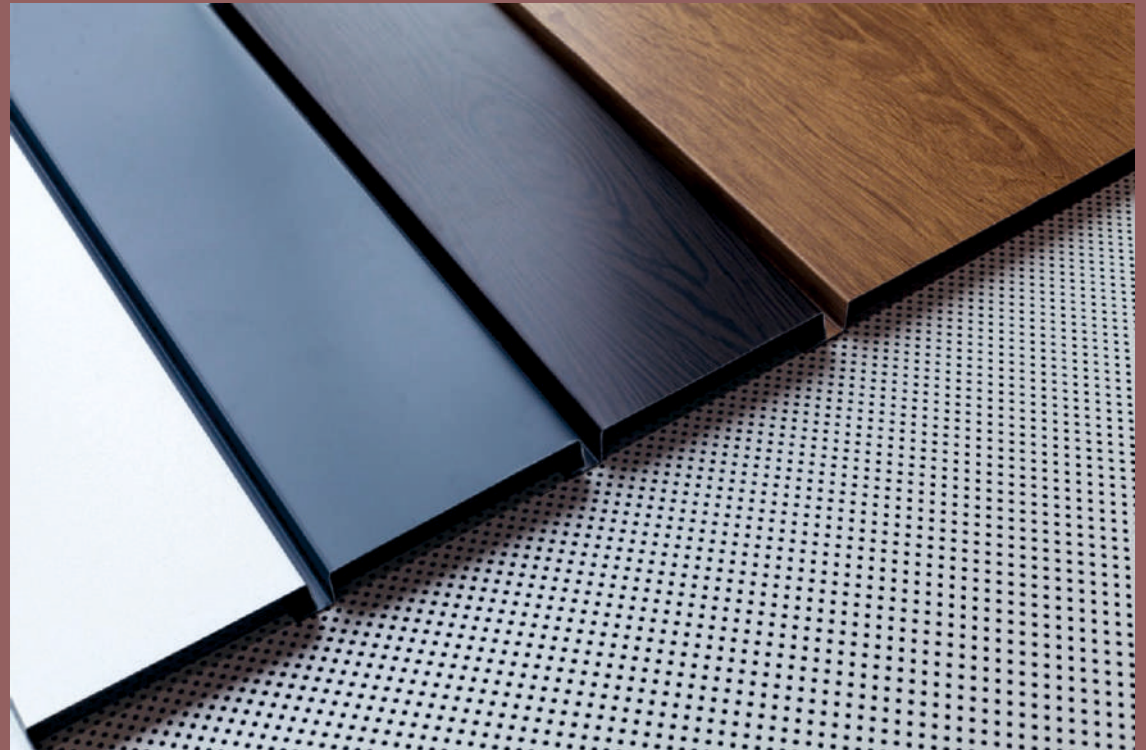
SS 304



Features of Materials



- Durable Construction
- Resistance to Wear and Impact
- Moisture and Chemical Resistance
- Wide Range of Colors and Designs
- Easy to Clean and Maintain
- Fire Retardant and UV Resistance
- Versatility in Applications
- Environment Friendly



Production Facilities and Timeline



Production Timeline

20 to 25 days



Dual-location Setup

Chandigarh and
Ahmedabad



Considerations

Efficiency, Optimization,
Inventory Management,
Quality Assurance



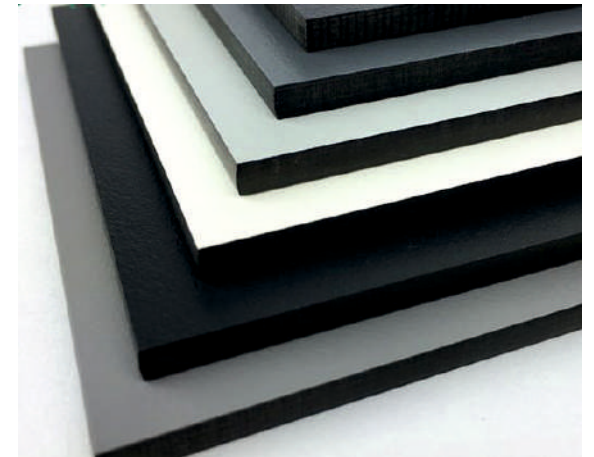
Godown Facility in Virar East



Quick access to essential materials



Contribution to meeting urgent project requirements



Running shades and hardware storage



Diversification into Additional Products



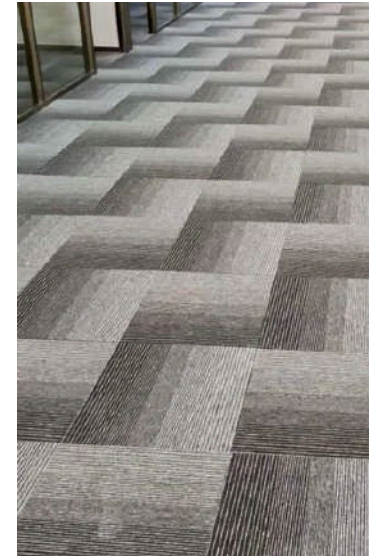
INDQB
Office
Workstation



INDQB
Modular
Ceiling



INDQB
Flush
Doors



INDQB
Carpet
Tile



INDQB
Door
Frames

Why Choose Cubicle India?

- Immediate Delivery
- No False Commitments
- Quality Focus
- 10 Years Warranty
- Nationwide Service
- Skilled Labor Force
- Tested and Certified Products
- Customized Design
- After-Sales Service Anywhere
- Experienced Technicians
- Prompt Response
- Reasonable Offers





Arctic White RC 601XL



Ivory RC 855XL



Grey RC 885XL



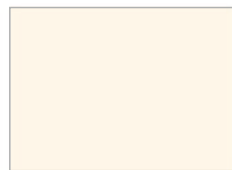
Light Grey RC 886XL



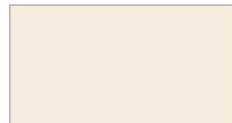
Brun Moyen RC 879XL



Egg White RC 13XL



Mysore Ivory RC 17XL



Peanut RC 859XL



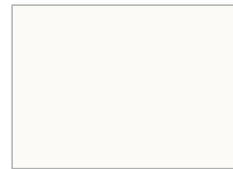
Creme Moyen RC 888XL



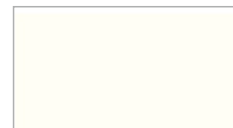
Slate Grey RC 862XL



D.Grey RC 873XL



Cold White RC 851XL



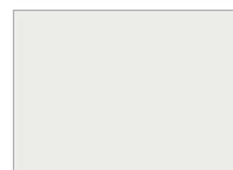
Frosty White RC 856XL



Beige(Irish Cream) RC 871XL



Grey RC 887XL



Silver Grey RC 860XL



Gothic Grey RC 861XL



Dark Grey RC 889XL



Ebony RC 720XL



Blue RC 884XL



Parrot Green RC 865XL



Burgundy RC 605XL



Black RC 11XL



D.Grey RC 801XL



Royale Blue RC 853XL



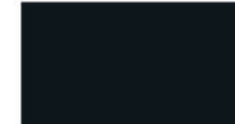
Green RC 869XL



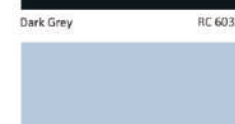
Yellow RC 15XL



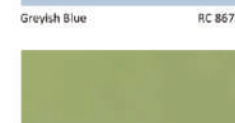
Vodafone Red RC 872XL



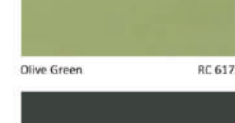
Dark Grey RC 603XL



Greylsh Blue RC 867XL



Olive Green RC 617XL



Green RC 606XL



Orange RC 857XL



Mango RC 864XL

Solids





Woodens





Supplying our cubicles

University

- Amethi University
- MM University
- SR University
- Parul University
- Vijaybhumi University
- Orchid International School
- JBCN School
- Expert School
- Euro International
- Eurokids
- Stone Chip School
- Diamond Jubilee School
- Agakhan School
- Universal School

Banking Sector

- ICICI Bank
- HDFC Life
- IDFC Bank
- Axis Bank
- ICICI Lombard
- DHFL
- UTI Asset etc

Automobile Sector

- Kia Motors
- Cargo Motors
- Jaguar
- Skoda
- DB Motorsports

Corporate and other Sector

- Godrej
- Lodha Group
- L&T
- Inorbit Mall
- Nexus Mall
- Dreams Mall
- P&G
- Goa Airport
- Vishakhapatnam Airport
- Bhuj Airport
- Ahmedabad Airport
- Patna Airport
- Jabalpur Airport
- Jabalpur Airport
- Goa Airport
- Amazon
- Flipkart
- Oppo
- Dominos
- Brand Factory
- Lubi
- Marathon Futurex
- I Phone Factory



Thanks!

OFFICE ADDRESS

2nd Floor Office No 202 & 203, Global Plaza Global City, Virar West.

Mob. : +91 8850336319

GODOWN ADDRESS

HDIL Industrial Park, Gala No 4, Building No 23, Virar East

Mob: +91 8070453555

Mail : sumanverma@cubicleindia.co.in

sales@cubicleindia.co.in

Website: www.cubicleindia.co.in | www.indqb.com

